



Installation Guide

NORWOOD &
NORWOOD MINI



MAC
METAL ARCHITECTURAL

THE LOOK AND
RICHNESS OF WOOD
without the maintenance!



ATTENTION

PROTECTION

The material may contain sharp edges. For this reason, we recommend that you wear the appropriate protective equipment: safety harness, safety boots, hard hat, safety glasses, and gloves.



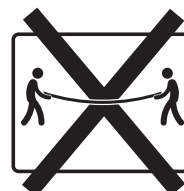
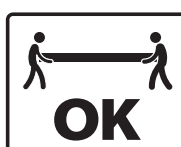
WARRANTY

FOR THE WARRANTY TO BE APPLICABLE, INSTALLATION MUST BE CARRIED OUT IN ACCORDANCE WITH THE STANDARDS SET OUT IN THE UPDATED BUILDING CODE, ALONG WITH THE MANUFACTURER'S RECOMMENDATIONS.

If a problem arises during profile installation, it is important to notify the distributor agent before installing 5 sheets to ensure that the warranty applies, and also to ensure that there are no corrections to be made to the installation surface.

HANDLING

Handle sheets with care. Always lift sheets vertically, not horizontally, to prevent them from bending or warping. Two or more people are recommended, depending on length.



PACKAGING HANDLING

To limit the risk of material breakage, it is important to follow certain rules when when handling packaging:

1. Keep movement of materials to a minimum before installation.
2. Always take particular care when transporting panels from one point to avoid bending the panels.
3. Use a forklift with forks adjusted to maximum width to handle panel packs of up to 20 ft.
4. Beyond this length, use a fork-lift truck with boom and loading bar, or a crane.



HANDLING PACKAGES
OF UP TO
MAXIMUM OF 20 FT



HANDLING PACKAGES
OF 20 FT AND OVER

ORDER INTAKE & INSPECTION

It is the customer's responsibility to inspect the order upon receipt. In the event of an error or damage to a panel, it is important to notify the distributor as soon as possible so that the situation can be rectified.

STORAGE

To preserve the aesthetic and physical properties of MAC Metal Architectural Norwood & Norwood Mini profiles, it is important to observe certain storage rules.

If panels cannot be installed immediately after delivery, store them indoors in a dry place, on a flat, well-ventilated surface. Keep movement to a minimum to minimize the risk of breakage.

Outdoor storage is the customer's responsibility. If outdoor storage is absolutely necessary, place the panels flat in a location that is not directly exposed to sunlight or extreme temperatures. These factors can cause the protective film to adhere more tightly to the panels, making it difficult to remove and leaving traces of adhesive on the surface of the product when removed. In addition, the accumulation of stagnant water on packaging can contribute to its deterioration, so it's vital to protect your order.

It is important to follow these recommendations:

1. If possible, choose a level, out-of-the-way location where the panels will not interfere with work on the site, and with limited exposure to the sun.
2. Cover the floor with plastic sheeting to prevent moisture from the ground from reaching the panels.
3. Place panels approx. 6 in (152 mm) from the floor to allow air circulation.
4. Raise part of the panels to allow rainwater to run off.
5. Protect the panels with a cloth. Do not use plastic, as this can lead to condensation.

ZIP SYSTEM, INSULATED R-SHEATHING PANELS

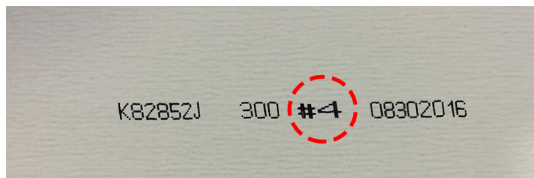
Installation of MAC coatings on Zip System, Insulated R Sheathing or similar dual-composition panels comprising a softer-than-wood compound is not recommended.

This type of panel does not provide a rigid installation base for MAC products and allows warping when exposed to sunlight depending on temperature, which then results in warping of the cladding panels.

WOOD COLLECTION INSTALLATION

All the colors in the WOOD COLLECTION are available in 6 planks of varying hues and shades. Each board is identified on the back by a sequence of bold numbers from 1 to 6, preceded by the pound sign #.

* It's important to pay particular attention to this and to install the planks randomly to optimize the wood effect. Never repeat the same installation sequence to avoid creating a tapestry effect.



1. TOOLS

To get the job done right, you'll need a bending machine or bending pliers, a screwdriver and sheet-metal chisel, sealant, MAC Cutter specialized for Norwood & Norwood Mini profiles, metal blade (see recommendations), electric scissors and a MAC bending bar. You'll also need a level and a tape measure.



ROTATING SAW

Cold-cutting rotary saws must be used with a specialized metal blade and in accordance with the manufacturer's recommendations. Please refer to the cutting guide available on our website for details of use.

1.1 ACCESSORIES

Here is a list of accessories for installing and finishing roof profiles:

- MAC wood or metal screws, depending on project type
- High-temperature sealing membrane
- Self-adhesive elastomeric membrane
- Steel roll
- Moldings
- Sealant

1.2 MAC SCREW TYPES

The use of MAC screws is highly recommended. In addition to being perfectly adapted to our profiles, they are duly tested and comply with ASTM B-117 2000h.

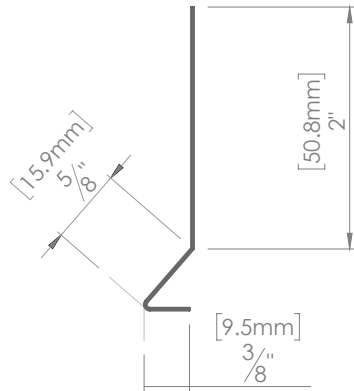
Should any other screw be used, it must comply with ASTM B-117 2000h to support the product's 40-year warranty.

Screw in with moderate contact so as not to interfere with material expansion. Screws must not exert upward or downward pressure to avoid rounding the material.

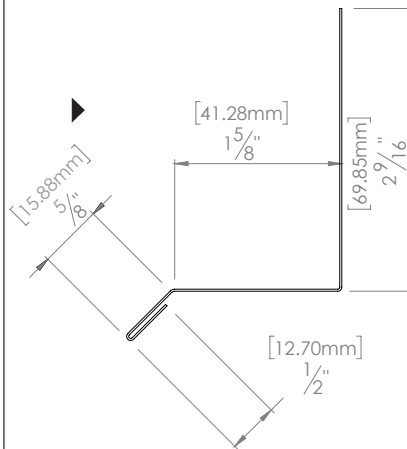


Norwood moldings & flashing

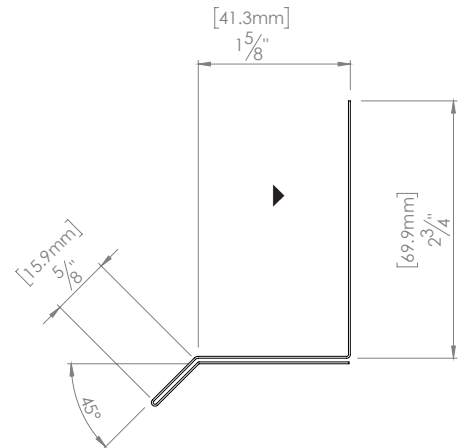
No. M10D
Starting strip



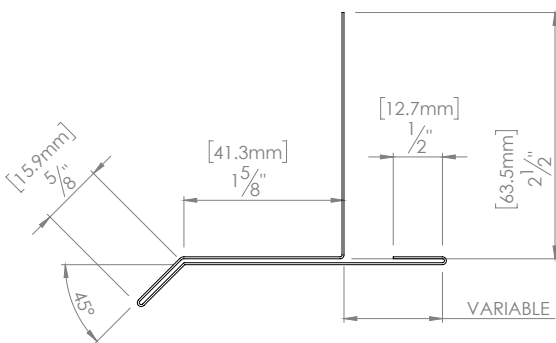
No. M50CD
Drip Flashing



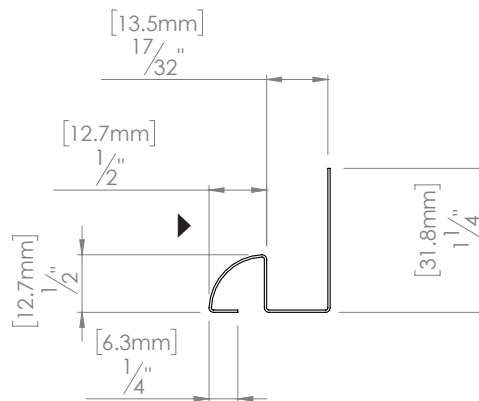
No. M53CD
Double Drip Flashing



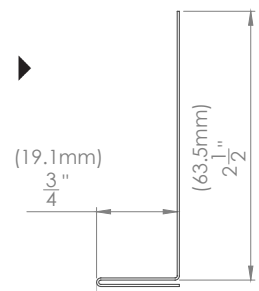
No. M56CD
Extended drip flashing w/variable



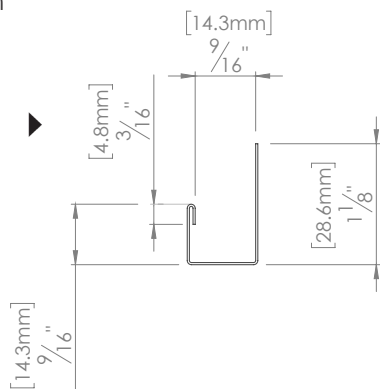
No. M22D
Inside corner or QJ



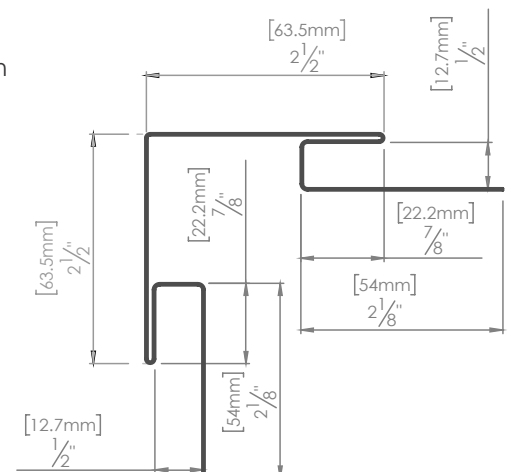
No. M14CD
L Trim



No. M01D
J Trim

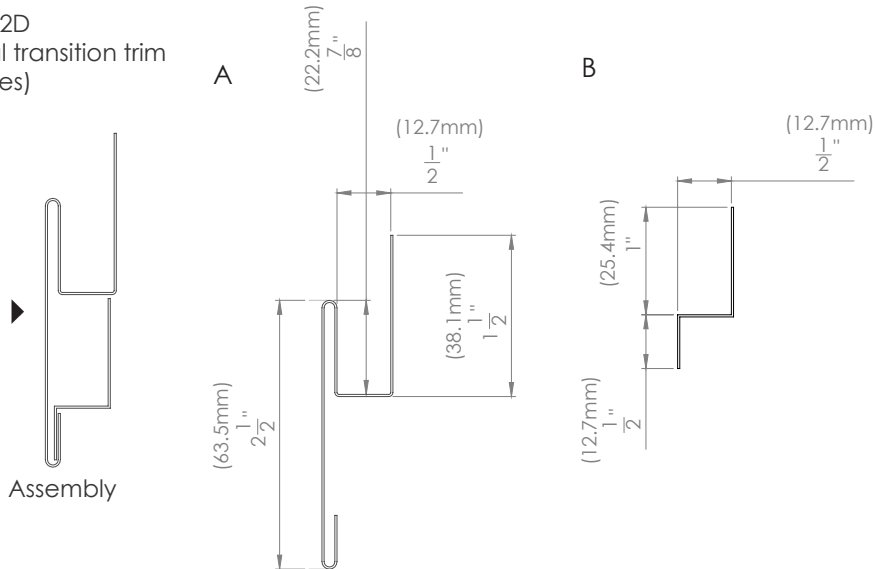


No. M20D
Outside corner with
integrated J trim

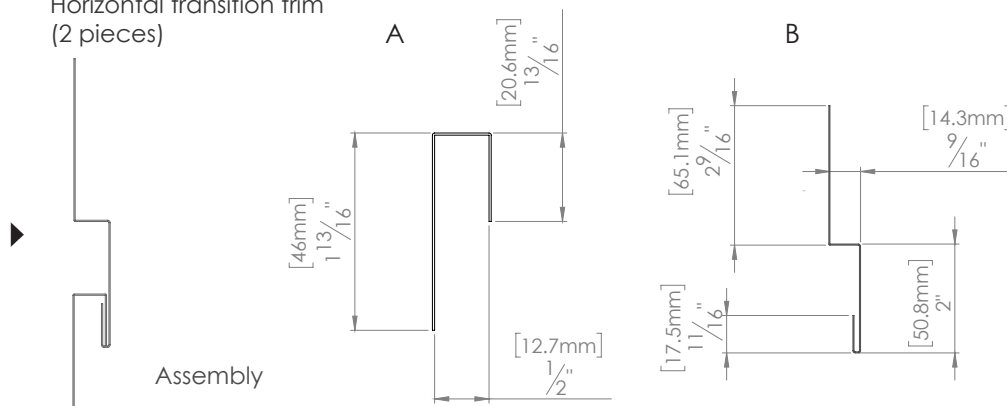


Norwood moldings & flashing

No. M12D
Vertical transition trim
(2 pieces)



No. M13D
Horizontal transition trim
(2 pieces)



2. INSTALLATION

RECOMMENDATIONS

This installation guide provides general guidelines for the installation of MAC Metal Architectural's non-recessed screw Norwood & Norwood Mini profiles. Siding installation should always be performed by a steel siding installation specialist. The information contained in this guide is for informational purposes only and may not be suitable for all building types and/or climatic conditions. The examples given are valid at the time of publication. At all times, please refer to and comply with local building codes and regulations.

MAC Metal Architectural reserves the right to modify the content of this guide at any time, without prior notice. To ensure you always have the most up-to-date information, please consult our website or contact your representative.

INSULATION & VENTILATION

When designing the building, make sure that all components are properly installed, including the ventilation system needed to prevent condensation. Condensation can occur in all types of buildings, and is therefore not unique to buildings made with metal profiles. Poor ventilation can lead to moisture problems and reduced insulation efficiency.

To ensure that the best practices are used for your project, refer to a building insulation and ventilation professional. They'll be able to guide and advise you properly.

NORWOOD PROFILE

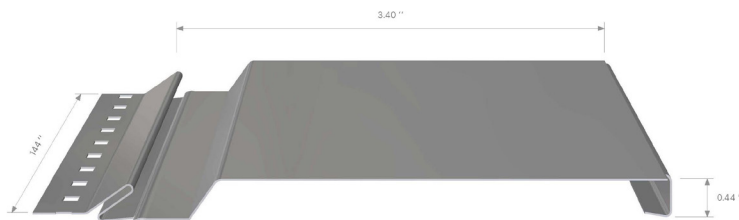
The Norwood is available in 5.38 in (136.652 mm) x 0.44 in (11 mm) x length of 144 in (3 658 mm) or 156 in (3 962.4 mm). It is distinguished by its two-dimensional space.



NORWOOD - 5.38 in (136.652 mm) x 0.44 in (11 mm) x 144 in

NORWOOD MINI PROFILE

The Norwood Mini is available in 3.40 in (86.36 mm) x 0.44 in (11 mm) x length of 144 po (3 658 mm) or 156 in (3 962.4 mm). It stands out for its infinite creative possibilities.



NORWOOD MINI - 3.40 in (86.36 mm) x 0.44 in (11 mm) x 144 in

WOOD OR STEEL FURRING

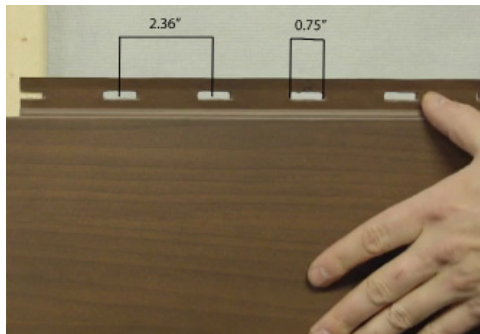
Depending on construction standards in your region, wood or steel furring may be required. This guide shows you how to install MAC cladding on wood furring. However, if your region's standards do not require it, it's up to you to decide whether or not to install it. In this case, installation can be carried out directly on the recommended rigid surface covered with a weather barrier.

CREATING AN INSTALLATION TEMPLATE

Prior to installation, we recommend that you calculate the width of the wall where you'll be installing the panels, so that you can create an installation template, if you haven't already done so, based on the size of the panels, and determine which sections will require cut panels.

PANEL FEATURES

- A. 0.16 in-wide screw rail along the entire length of the structure
- B. 3/4 in holes for screws, with 2.36 in between each hole (center to center).



3. PREPARATION

Before beginning the first step, make sure that the surface you wish to cover with Norwood & Norwood Mini profiles meets all industry standards in effect in your region.

Check with local building authorities regarding the installation of metal or wood furring. If they are not required, it's up to you whether or not to install them.

MAC also recommends that you install a self-adhesive SOPRA Fil Stick VP membrane from Soprema self-adhesive membrane, and rely on the building code for your region.

We also recommend that you follow the building code for your province.

4. INSTALLATION

PLASTIC FILM

Each sheet is covered with a plastic film designed to prevent damage to the surface during handling, transport or installation.

It is important to remove the plastic film BEFORE installing the mouldings and sheets, to prevent it from becoming trapped during assembly.

Make sure your walls are square before you start installing siding.

Norwood siding can be installed horizontally, vertically or diagonally.

4.1 STARTING STRIP

Using a laser level, chalk marker or standard level, draw a guide line in the direction of the siding installation.



Now, fix the M10D starter strips 3 inches above where you want your wall to begin. Use flathead MAC Anticorrosion Wood Screws or MAC Anticorrosion K-LATCH Screws (1 1/8 or 2 1/2 in). Secure the strip using one screw. When you are level, screw it in place.

For a vertical installation, replace the M10D starter strip with an M50D drip strip, no starter strip will then be necessary.

****Ensure that the starter strip is level, as it will serve as a guide for the rest of the installation**



4.3 PLASTIC FILM

Wherever possible, only remove the plastic membrane once the installation is done.



4.4 CUTTING

If you need to cut the panels, use the specialized MAC Cutter especially design for Norwood siding and recommended by MAC Metal Architectural. You can also use, if needed, a snip or a sheer.

*The use of an electric saw or an electric grinder is not recommended or covered by MAC Metal Architectural warranty.



4.5 JOINTS

Only factory cuts should be used for wall joints and cutting on site should only be done for wall moldings. Leave a 1/8- to 1/4-inch space between two females to allow for expansion.



4.6 EXPANSION

At the cross joint of the panels, space must be provided for expansion or contraction of the material depending on the temperature during installation. A 1/8- to 1/4-inch space must be provided between two female panels.

In the case of a new wood building with more than one storey, it will be necessary to provide a transition molding on each floor; on a steel structure install a transition molding every 30 ft. In the case of a very long wall, it is recommended to install a vertical transition molding every 30 ft.

5. INSIDE CORNER

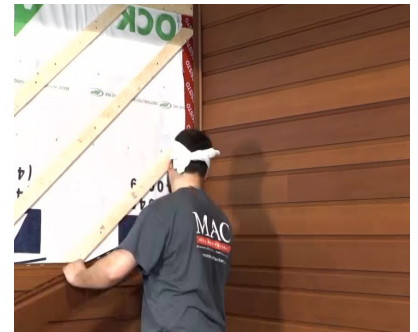
5.1 L STEEL CORNER

Apply an L-shaped steel wedge directly to the weather barrier and/or the furring.



5.2 QJ TRIM INSIDE CORNER

Proceed with the installation of the siding on one of the walls, fix in place the QJ Trim for the interior corner, M22C. Continue with the installation of the panels, making sure to leave a 1/8 in space for material expansion, on the other wall by sliding the planks at the end of the QJ molding inside corner.



6. OUTSIDE CORNER

Install the outside corner with integrated J-Trim, M20D. Fasten the moulding in place with screws on each side, you can proceed with the rest of the panel installation at the desired time.



7. WINDOW FRAMING

7.1 ADJUSTMENT

Measure and adjust the plank as necessary before securing it in place.

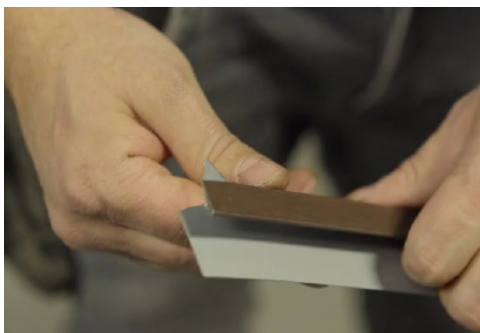
In case the plank need adjustment, cut the plank to the height necessary. Then attach the cut-out upside down to give more support to the plank.

Follow the same steps for vertical installation.



7.2 SOFFIT J TRIM INSTALLATION

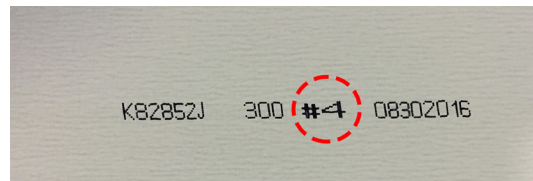
If the wall you are covering has a window, first install the J-Trim molding , M01D on three sides of the window. Then install a drip molding above the window frame.



7.3 AROUND THE WINDOW

Continue with the installation of the panels on each side of the window, taking care to continue to install panels of various shades and tones in a random sequence in order to avoid creating a repetitive effect. Refer to the numbering at the back panels.

Follow the same steps for vertical installation.



7.4 TOP OF THE WINDOW

We recommend the installation of a drip moulding, before installing the first panel from the top of the window.

In case the panel does not reach the full height, cut the panel make sure to provide an additional ½ in. for a 45-degree bend. Then fix in place the remaining cut trim upside down to provide more support. Then clip the folded panel into the extra piece.

As shown in section 7.2.



7.5 TOP OF THE WINDOW



8. FINISHING A WALL

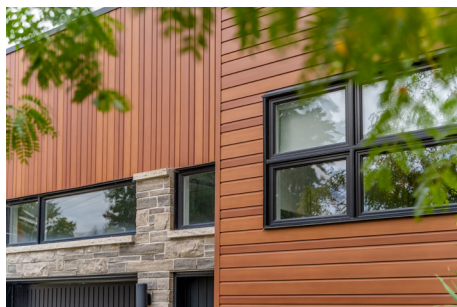
8.1 ADJUSTMENT

Measure and adjust the final plank accordingly, using an electric shear, before attaching it to the J-Trim moulding M01D.



If the plank isn't flush with the height of the wall, place the extra piece backwards onto the J-Trim moulding, M01C to add support to the plank that was cut.





For more information on MAC Norwood & Norwood Mini profiles, visit the PRO Space section of our website, MACmetalarchitectural.com or our Youtube channel.

Here you'll find a wealth of technical information on our profiles, such as a series of installation videos, molding booklets, as well as access to technical drawings.

MAC
METAL ARCHITECTURAL

MAC Metal Architectural
5975 Ch. de la Savane,
Saint-Hubert, QC J3Y 0X1
T. 450 464-5486 | T F. 450 464-4538
info@MACmetalarchitectural.com
MACmetalarchitectural.com