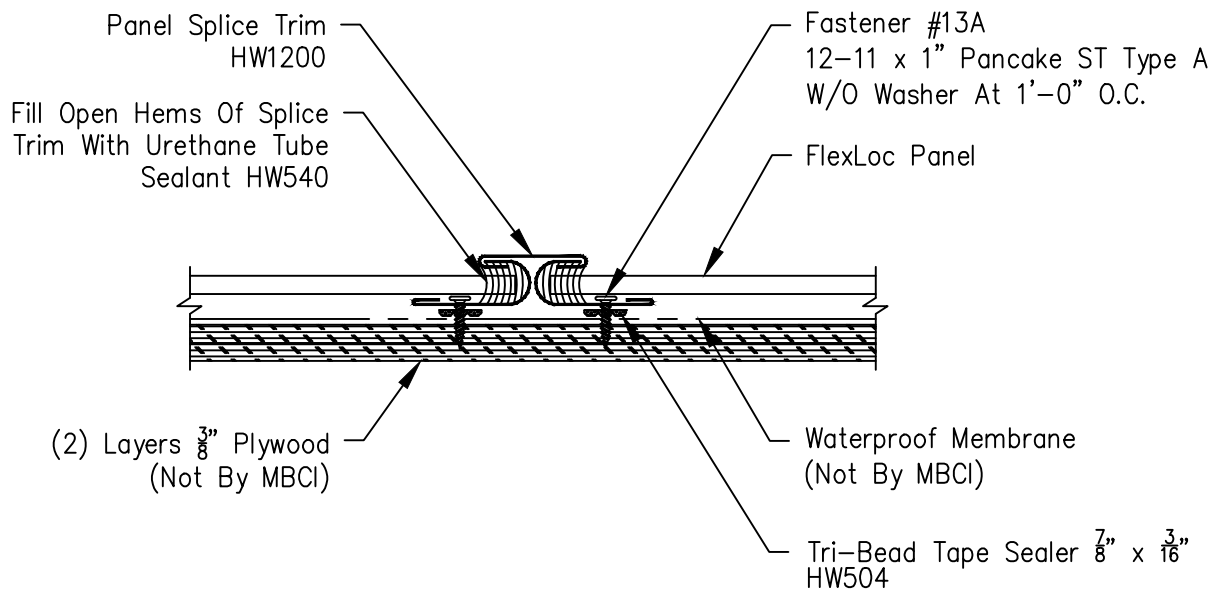


FlexLoc Panel  
Barrel Roof - Splice Detail

Page  
FLX-BR-02

Date  
Feb '20

Rev  
00



Notes:

1. Install Tri-Bead Tape Sealer on the back side of splice trim along line of attachment.
2. Fill open hems of Splice Trim with Urethane Tube Sealant.
3. Install Splice Trim to roof with Fastener #13A at 1'-0" o.c. Fasteners must go through tape sealer. Slide panels into open hem of splice trim working the panels to the radius of the roof as it is being installed. Do not install panel clips closer than 1'-0" from end of panels.