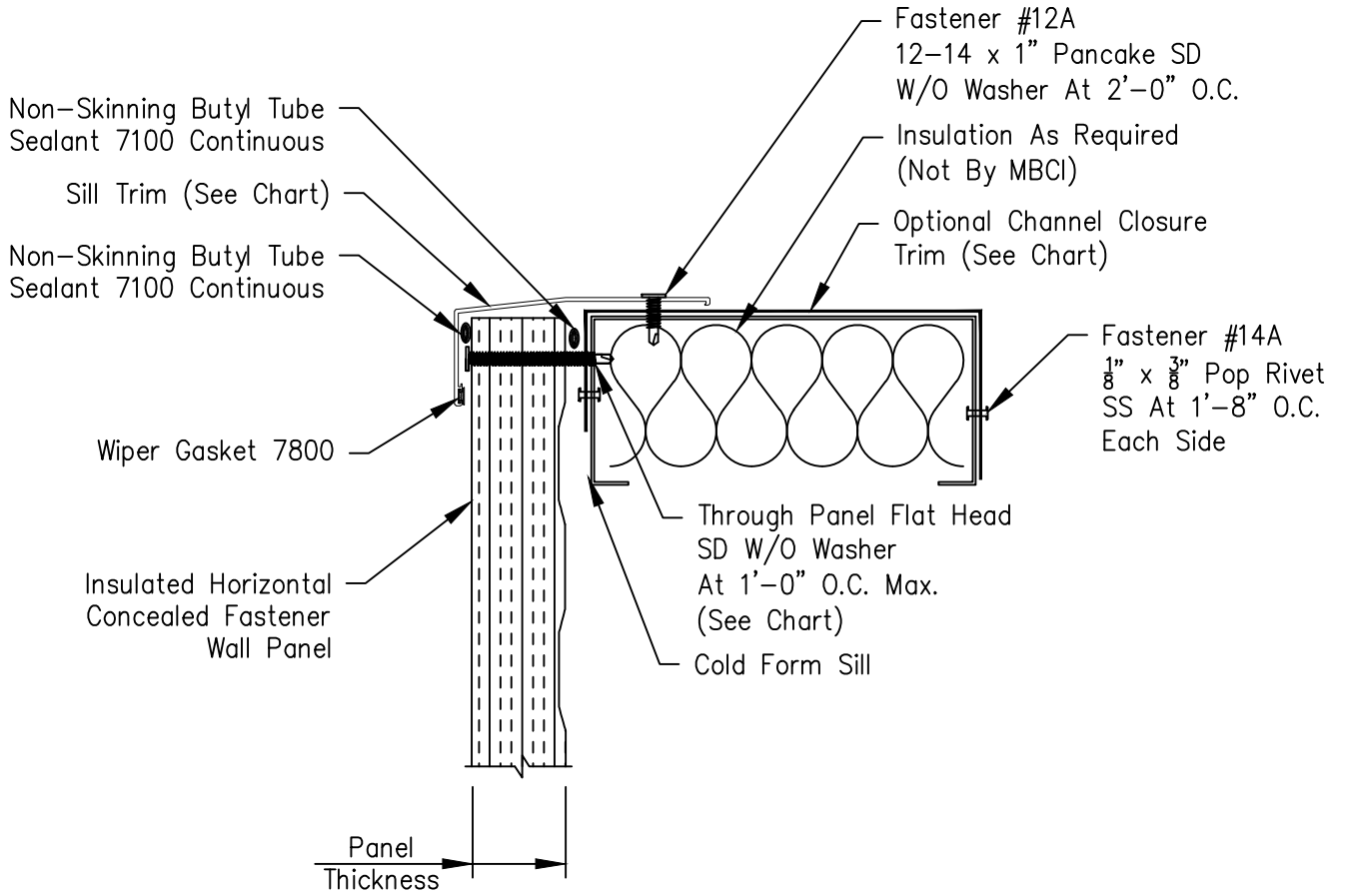


Horizontal Insulated CF Wall Panel Sill With Extruded Trim



Installer Note:
The interior leg of the Installed Channel Closure Trim is to be oriented ($\pm \frac{1}{8}$ "") to match the interior leg of the Header or Jamb.

Wall Panel Thickness	Extruded Sill Trim	Through Fastener
2"	9413	#1424
2 $\frac{1}{2}$ "	9413	#1432
3"	9412	#1432
4"	9412	#1440

Member Size	Channel Closure
8"	F981
10"	F982
12"	F169