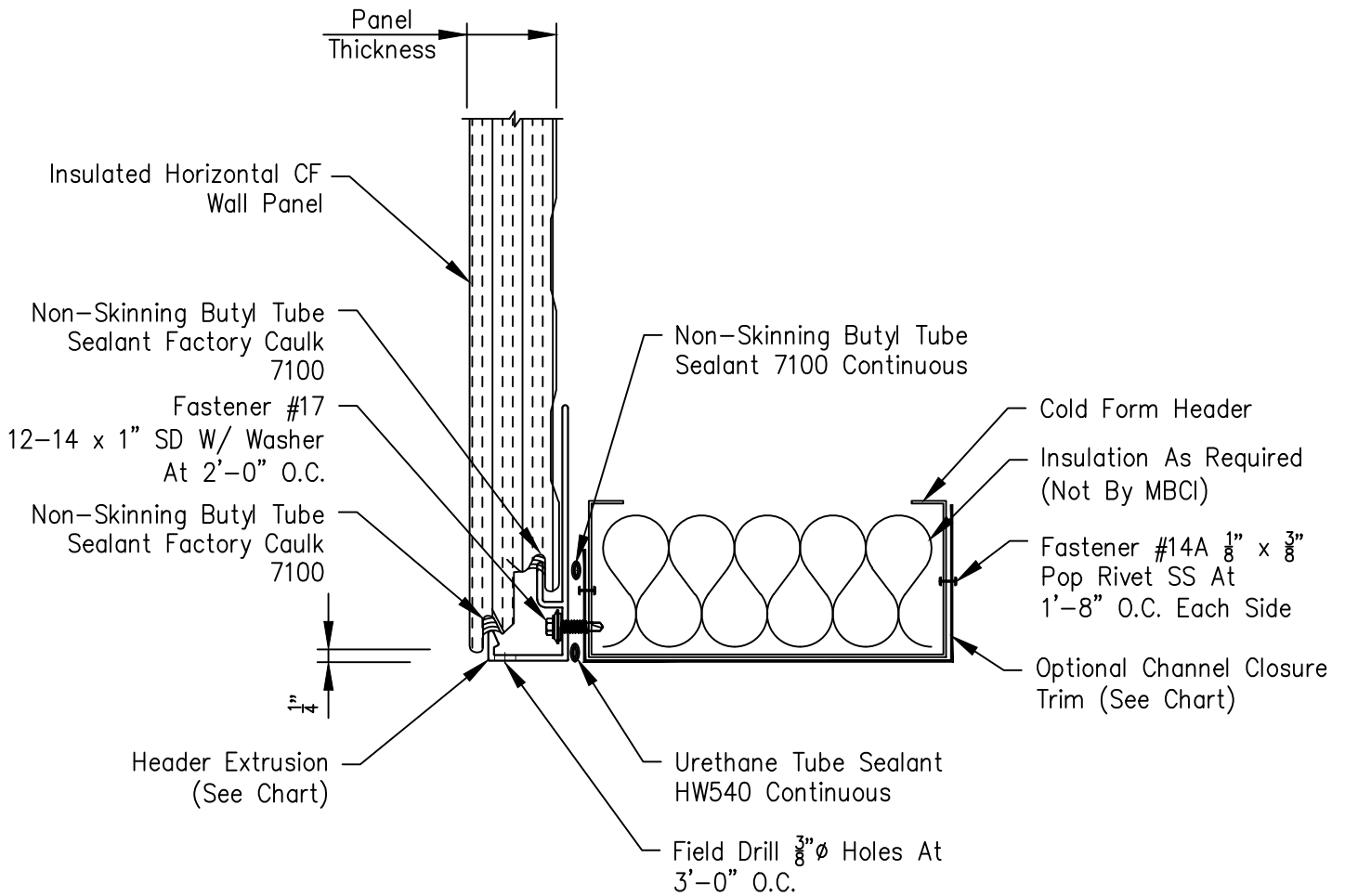


# Horizontal Insulated CF Wall Panel Head With Optional Extruded Trim - On Module



**Installer Note:**  
The interior leg of the Installed Channel Closure Trim is to be oriented ( $\pm 1/8$ " ) to match the interior leg of the Header or Jamb.

Wall Panel Thickness	Header Extrusion
2"	9479
2 1/2"	9478
3"	9477
4"	9475

Member Size	Channel Closure
8"	F981
10"	F982
12"	F169