



COMMERCIAL ROLL-UP DOORS

COMMERCIAL DOOR 2000 SERIES

LIGHT DUTY COMMERCIAL GRADE DOOR

The 2000 Series is the perfect door for light duty applications that require frequent use. These low-maintenance doors are ideal for warehouses, car washes, machine shops, auto body shops, and more. The commercial-grade steel curtains are designed to meet or exceed operational requirements, and the 16-gauge 12” drums are easy to retract and maintain.

Commercial Steel Curtain Roll-Up Door Solutions:

1900 Series (1950 Insulated)

- 26-gauge Grade E galvanized steel
- Low overhead solution

2000 Series (2250 Insulated)

- 16-gauge galvanized steel drums with steel ball bearings
- 26-gauge Grade E galvanized steel

2500 Series (2750 Insulated)

- Heavy duty
- 10-gauge steel slide bolt lock
- Width up to 18 feet

3000 Series (3250 Insulated)

- Moderate to high wind load
- 80 degree windlock design

5000 Series (5250 Insulated)

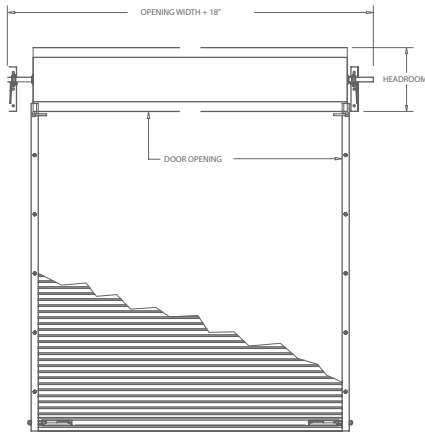
- Aluminum bottom bar with steel angle reinforcement
- Wind certified



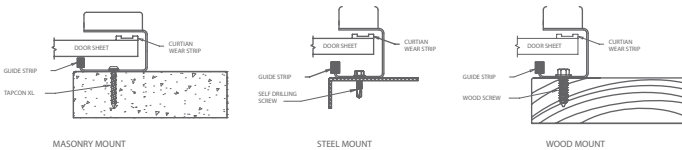
COMMERCIAL DOOR 2000 SERIES

COMMERCIAL ROLL-UP DOORS

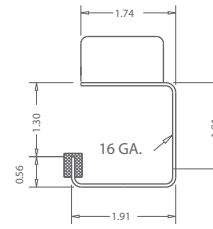
INTERIOR ELEVATION



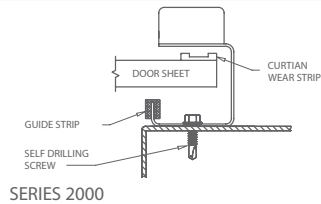
GUIDE MOUNTING



GUIDE DETAIL

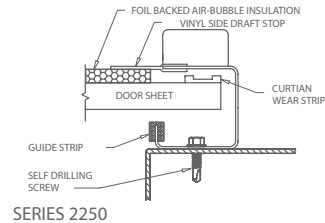


DOOR ENGAGEMENT



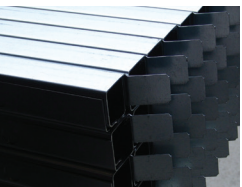
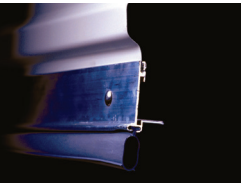
SERIES 2000

INSULATED DOOR DETAIL



SERIES 2250

Also available with insulation (2250 Series)



Curtain

- 26-gauge galvanized, Grade E hard steel
- $\frac{5}{8}$ " ribbed corrugation
- Maximum opening size of 12' x 18'
- Flexible wear strips

Bottom Bar

- 6063 - T6 aluminum extrusion
- 2" x 1 1/2" 11-gauge galvanized steel angle
- Bulb astragal
- Stainless steel nuts and bolts

Axle-Drum Assembly

- 1 5/16" O.D. steel axle, 14-gauge
- 11-gauge axle on doors over 10' wide
- Utilizes 12", 16-gauge drums
- Shielded steel ball bearings in drums
- Full top sheet

A.C.E. Guide System

- 16-gauge galvanized steel
- Adjustable bolt on head stop
- Polyethylene wear strip
- Pre-punched for lock and attachment fasteners

Hardware

- Saddle clamps with set fasteners
- 10-gauge slide locks; 2 per door
- 16-gauge step plates; 2 per door
- 1/4" steel angle T-bracket

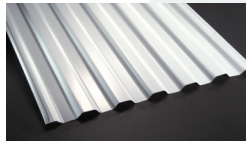
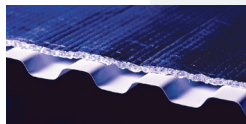
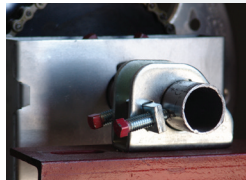
Technical Notes

- Doors up to 10' have 20" of headroom
 - Doors 10' to 14' have 22" of headroom
 - Doors over 14' have 24" of headroom
 - Doors require up to 24" of vertical clearance and 10 1/2" of side room. Smaller doors may require less.
- For specific measurements, contact MBCI at (877) 713-6224

Options

- Insulated 2250 Series
- 1900 Series - low overhead option
- Chain hoist 4:1 reduction
- Vision panels (17" x 5")
- Top draft stop
- Side draft stop
- Hood
- Steel mounting plates
- Electric operator

NOTE: The 2000 is not rated for wind loads. Please see 2500, 3000 or 5000.



Descriptions and specifications contained herein were in effect at the time this publication was approved for printing. In a continuing effort to refine and improve products, MBCI reserves the right to discontinue products at any time or change specifications and/or designs without incurring obligation. To ensure you have the latest information available, please inquire or visit our website at www.mbcicom. MBCI's insulated metal panel product line is manufactured by Metl-Span®.

