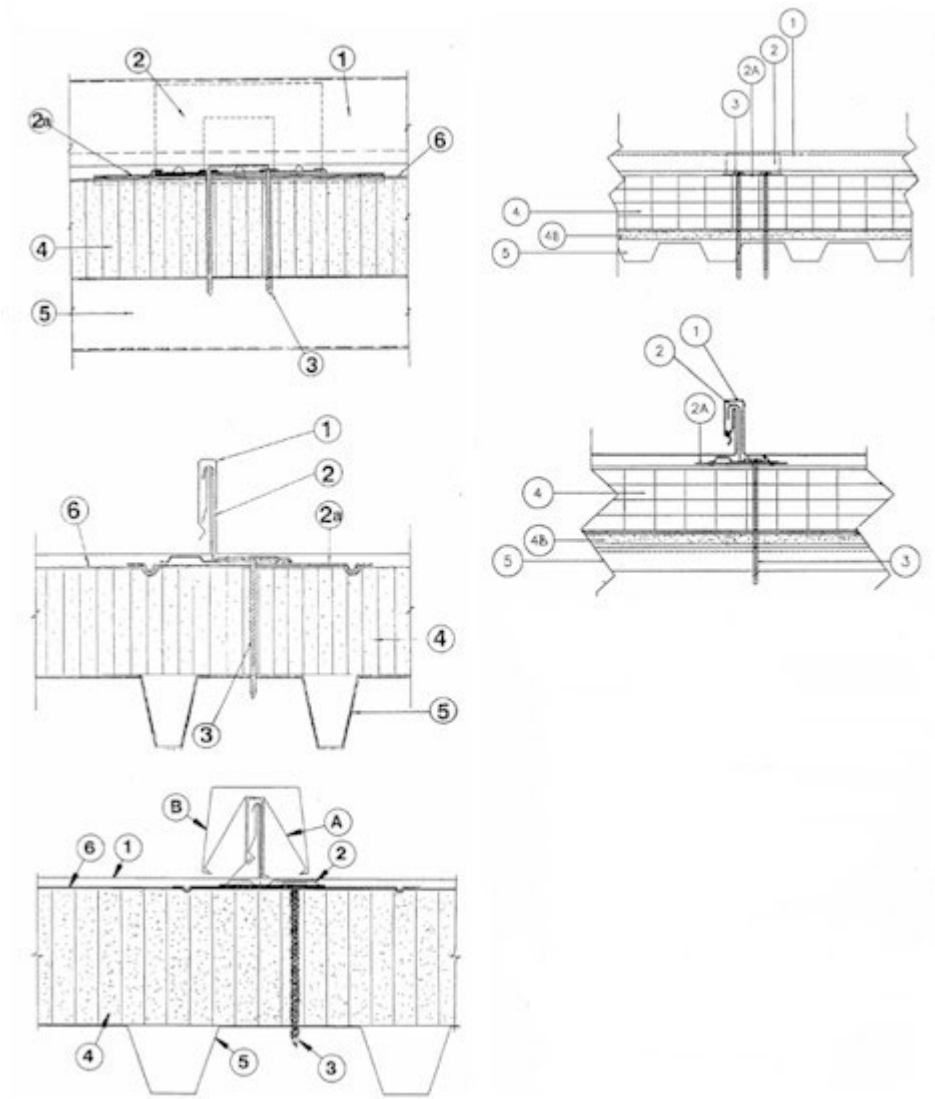


Construction No. 303

Uplift - Class 90

Fire Not Investigated



1. Metal Roof Deck Panels* No. 24 MSG min thickness coated steel. Panel width 18 in. max., 10 in. min. ribs height 1-3/4 in. at female side. Panels continuous over three or more clips with no end laps. A bead of sealant may be used at panel side joints.

- A&S BUILDING SYSTEMS, INC.-"LokSeam"
- AEP-SPAN - "18 in. Snap-Seam" ; "12 in. Snap-Seam" ; "10 in. Snap-Seam"
- ARCHITECTURAL BUILDING COMPONENTS INC - "Permaseam Panel-12 or -18"
- ARS INDUSTRIES INC - "US 175LS"
- CENTRIA - "SDP 175-12, -16, -18"
- CONSOLIDATED METALS OF FLORIDA, DIV OF - "CSL-675"
- CUSTOM PANEL INDUSTRIES LLC - "Design-Lok"
- ENGINEERED METAL SYSTEMS INC - "Structural Standing Seam"
- HAWAII METAL ROOFING INC - "Tropa-Lok"
- KOVACH INC - "K-Lok Structural Panel"
- MADDOX ROOFING & CONSTRUCTION INC - "SS675 SNAP-LOK"
- MBCI-"LokSeam"
- MESCO METAL BUILDINGS-"LokSeam"
- METAL-FAB INC - "MetFab Snap-On 675"
- METAL SALES MFG CORP - "Vertical Seam"
- NCI BUILDING SYSTEMS LP-"LokSeam"
- NEW TECH MACHINERY CORP - "Snap Panel 675"
- PETERSEN ALUMINUM CORP - "Snap-Clad"
- ROYAL ALUMINUM INC - "Royal RL-16"
- STEELOX SYSTEMS INC - "LS"
- TOMEN BUILDING COMPONENTS INC - "SS-200-12" , "SS-200-16" , "SS-200-18"

2. Roof Deck Fasteners* (Panel Clips) One piece assembly, No. 24 MSG min thickness, 3-1/2 in. wide, 1-15/16 in. high. Clip spacing to be 48 in. OC. Clips to interface with Item 2A (bearing plate).

- AEP-SPAN - "Snap-Seam Clip"
- ARCHITECTURAL BUILDING COMPONENTS INC - "Permaseam Clip"
- CENTRIA - "C175"
- CUSTOM PANEL INDUSTRIES LLC - "Design-Lok Clip"
- KOVACH INC - "K-Lok Structural Clip"
- NCI BUILDING SYSTEMS LP-"LokSeam UL 90 Clip"
- METAL SALES MFG CORP - "Vertical Seam Clip"
- PETERSEN ALUMINUM CORP - "Snap-Clad Clip"
- STEELOX SYSTEMS INC - "LS Clip"
- TOMEN BUILDING COMPONENTS INC - "Series 200 Clips"
- U S METALS CORP - "Snap Lock Clip-675"

2A. Roof Deck Fasteners* (Bearing Plate) One piece assembly, No. 24 MSG min thickness steel, 4-1/2 in. wide, 6 in. long.

- AEP-SPAN - "Snap-Seam Plate" .

2B. Bearing Plate-(Not Shown) To be used with "LokSeam UL 90 Clip" , "Permaseam Clip" or "K-Lok Structural Clips" only, (Item 2). Bearing plates to be 16 MSG min coated steel, 3-7/8 wide by 5 in long (50,000 psi min yield strength).

2C. Bearing Plate* (Not Shown) - To be used with "Snap-Clad Clips" only (Item 2). To be 24 MSG thick coated steel, nom 4-5/8 in. wide by 6 in. long.

- PETERSEN ALUMINUM CORP - "Snap-Clad Bearing Plate" .

2D. Bearing Plate (Not Shown) - To be used with "Vertical Seam Clip" only (Item 2) - Flat plate, 4-1/2 in. wide, 6 in. long fabricated from No. 24 MSG coated steel. Two 1/4 in. diam guide holes located to accommodate panel clip screw fasteners. (33,000 psi min yield strength).

3. Panel Fasteners - (Screws) Fasteners used to attach panel clips and bearing plates (Items 2 & 2A) through rigid insulation and optional OSB and/or gypsum board and into light gauge steel deck (Item No. 5) to be No. 14 truss head type with No. 3 Phillips drive, self-drilling steel screws. Two screws per clip to be used, inserted through 1/4 in. diam guide holes. Fasteners to penetrate liner panel 3/4 in. min.

4. Foamed Plastic - (Rigid Insulation) Min thickness 1 in., max thickness 4-1/2 in. Density to be a min of 2 pcf.

4A. Oriented Strand Board (OSB) (Optional) - (Not Shown) - Located over foamed plastic (Item 4). Max thickness 7/16 in. Note: Bearing plates not required when OSB is used.

4B. Gypsum Board (Optional) - Max thickness 5/8 in. Located over liner panel (Item 5).

5. Liner Panel Min thickness No. 22 MSG. Coated steel (33000 psi) min yield strength min depth 1-1/2 in., max pitch 6 in. fabricated to various profiles.

6. Underlayment (Not shown) - One ply of 30 lb roofing felt or one layer of bituminous resin type water proofing membrane.

7. Supports (Not Shown) Used to support liner panels, spaced per deck manufacturer's specifications for uplift.

The following items may be used in conjunction with the "AEP SPAN" Metal Roof Deck Panels (Item 1). When used, the panel system is identified as "SNAP-SEAM (SBS)" .

A. Batten Clips* Slipped over ribs formed by roof deck panels. One piece assembly, 1-3/4 in. high, 1-3/4 in. max width, with four legs and two arms. Formed to engage ribs of AEP SPAN Panels and Batten Cap (Item B). Clips spaced 48 in. OC.

- AEP-SPAN - "SNAP-SEAM (SBS) Clip"

B. Batten Cap* Slipped over batten clip. Two inches high 1-1/2 in. wide at top with sides formed to engage batten clip. Snapped over batten clips.

- AEP-SPAN - "SNAP-SEAM (SBS) Batten"

The following items may be used in conjunction with the "K-Lok Structural Panel" (Item 1).

A. Batten Clips* Slipped over ribs formed by roof deck panels. One piece assembly formed to engage ribs of "K-Lok Structural Panels (Item 1) and Batten Cap (Item B). Spaced 48 in. OC.

- KOVACH INC - "K-Lok Structural Batten Clip" .

B. Batten Cap* Slipped over batten clip (Item A) and formed to snap and engage batten clip.

- KOVACH INC - "K-Lok Structural Batten" .

The following items may be used in conjunction with the "Design-Lok" panel (Item 1).

A. Batten Clips* Slipped over ribs formed by roof deck panels. One piece assembly formed to engage ribs of "Design-Lok" panels (Item 1) and "Design-Lok Batten Cap" (Item B) spaced 48 in. OC.

- CUSTOM PANEL INDUSTRIES LLC - "Design-Lok Batten Clip" .

B. Batten Cap* Slipped over batten clip (Item A), formed to snap over and engage batten clip.

- CUSTOM PANEL INDUSTRIES LLC - "Design-Lok Batten Cap" .

The following items may be used in conjunction with the "Structural Standing Seam" panel and a Classified Batten Clip as described in this construction.

A. Snap-on-Batten Slipped over a Classified Batten Clip, formed to snap over and engage batten clip.

The following items may be used in conjunction with the "SDP 175-12, -16, -18" panels. (Item 1).

A. Batten Clips* Slipped over ribs formed by roof deck panels. One piece assembly formed to engage ribs of "SDP 175-12, -16, -18" panels. (Item 1) and "SDP 175B" battens (Item B). Spaced 48 in. OC.

- CENTRIA - "175B" .

B. Batten Cap* Slipped over batten clip (Item A) and formed to snap and engage batten clip.

- CENTRIA - "SDP 175B" .

Refer to General information, Roof Deck Constructions (Roofing Materials and Systems Directory) for items not evaluated.

*Bearing the UL Classification Marking