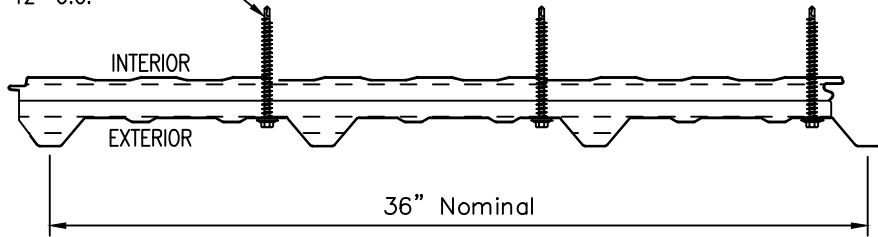
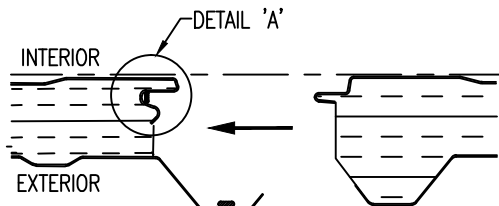


THROUGH PANEL FASTENER W/  
WASHER @ 12" O.C.



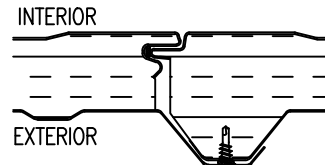
LS-36™ INSULATED WALL PANEL



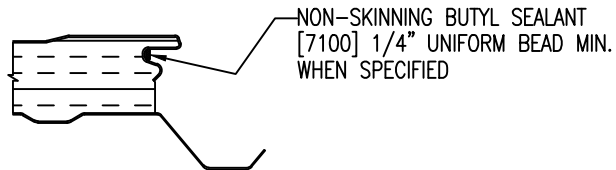
NON-SKINNING BUTYL SEALANT  
[7100] 3/8" BEAD CONTINUOUS  
@ PANEL SIDE LAP  
(WHEN SPECIFIED)

INSTALLATION DIRECTION

1/4-14 x 7/8 LAPTEK W/ WASHER  
[FASTENER #4A] @ 20" O.C.



SIDELAP FASTENERS



DETAIL 'A'

JOINT SEALANT APPLICATION