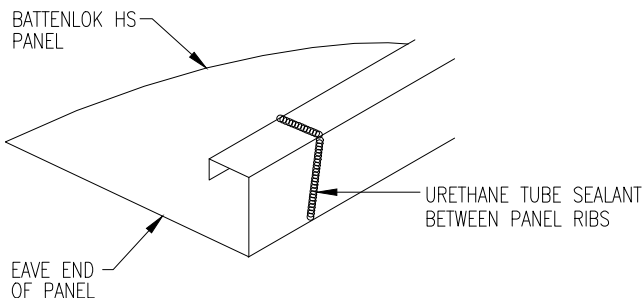


FASTENER SPACING @ EAVE

1/4-14 x 1 1/4 LONG-LIFE SELF-DRILLER W/WASHER [FASTENER #1E]



EAVE SEALANT DETAIL

URETHANE SEALANT MUST COME IN CONTACT WITH TAPE SEALER TO FORM A WEATHERTIGHT SEAL

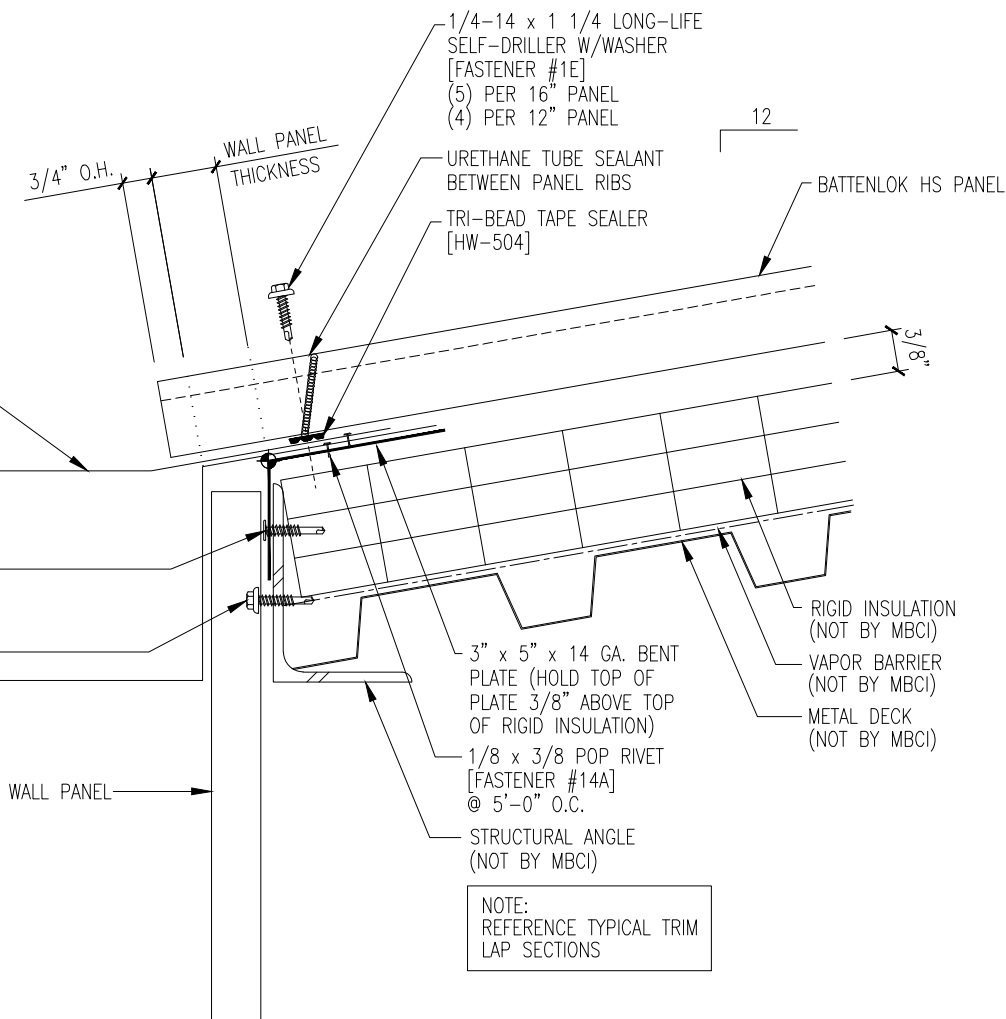
GUTTER STRAP [FL-310] @ 32" O.C. MAX.

1/8 x 3/16 POP RIVET [FASTENER #14] (2) PER STRAP

BOX GUTTER [FL-308]

12-24 x 1 1/2 PAN HEAD TEK 4.5 SELF-DRILLER [FASTENER #16] @ 12" O.C.

12-24 x 1 1/4 LONG-LIFE TEK 4.5 W/WASHER [FASTENER #78]



NOTE: REFERENCE TYPICAL TRIM LAP SECTIONS

O/O DIMENSION (SEE PLAN)